

Novell NetWare® 6.5

www.novell.com

February 28, 2005

ADMINISTRATION OVERVIEW



Novell®

Legal Notices

Novell, Inc. makes no representations or warranties with respect to the contents or use of this documentation, and specifically disclaims any express or implied warranties of merchantability or fitness for any particular purpose. Further, Novell, Inc. reserves the right to revise this publication and to make changes to its content, at any time, without obligation to notify any person or entity of such revisions or changes.

Further, Novell, Inc. makes no representations or warranties with respect to any software, and specifically disclaims any express or implied warranties of merchantability or fitness for any particular purpose. Further, Novell, Inc. reserves the right to make changes to any and all parts of Novell software, at any time, without any obligation to notify any person or entity of such changes.

You may not use, export, or re-export this product in violation of any applicable laws or regulations including, without limitation, U.S. export regulations or the laws of the country in which you reside.

Copyright © 2003-2005 Novell, Inc. All rights reserved. No part of this publication may be reproduced, photocopied, stored on a retrieval system, or transmitted without the express written consent of the publisher.

Novell, Inc. has intellectual property rights relating to technology embodied in the product that is described in this document. In particular, and without limitation, these intellectual property rights may include one or more of the U.S. patents listed at <http://www.novell.com/company/legal/patents/> and one or more additional patents or pending patent applications in the U.S. and in other countries.

Novell, Inc.
404 Wyman Street, Suite 500
Waltham, MA 02451
U.S.A.

www.novell.com

NetWare 6.5 Administration Overview

[February 28, 2005](#)

Online Documentation: To access the online documentation for this and other Novell products, and to get updates, see www.novell.com/documentation.

Novell Trademarks

ConsoleOne is a registered trademark of Novell, Inc. in the United States and other countries.

DirXML is a registered trademark of Novell, Inc. in the United States and other countries.

eDirectory is a trademark of Novell, Inc.

exteNd is a trademark of Novell, Inc.

GroupWise is a registered trademark of Novell, Inc. in the United States and other countries.

Internet Protocol Exchange and IPX are trademarks of Novell, Inc.

NetWare is a registered trademark of Novell, Inc. in the United States and other countries.

NetWare Loadable Module and NLM are trademarks of Novell, Inc.

NMAS is a trademark of Novell, Inc.

Novell is a registered trademark of Novell, Inc. in the United States and other countries.

Novell Certificate Server is a trademark of Novell, Inc.

Novell Cluster Services is a trademark of Novell, Inc.

Novell Directory Services and NDS are registered trademarks of Novell, Inc. in the United States and other countries.

Novell iFolder is a registered trademark of Novell, Inc. in the United States and other countries.

Nsure is a trademark of Novell, Inc.

Nterprise is a trademark of Novell, Inc.

Nterprise Branch Office is a trademark of Novell, Inc.

SUSE is a registered trademark of SUSE LINUX AG, a Novell business.

Ximian is a registered trademark of Novell, Inc. in the United States and other countries.

ZENworks is a registered trademark of Novell, Inc. in the United States and other countries.

Third-Party Materials

All third-party trademarks are the property of their respective owners.

Contents

- About This Guide** **7**

- 1 Overview: NetWare 6.5 Administration Utilities** **9**
 - About NetWare 6.5 Administration Utilities 9
 - About the NetWare 6.5 Welcome Web Site 9
 - What's Next. 10

- 2 NetWare 6.5 Welcome Web Site** **11**
 - About the Welcome Web Site 11
 - For Administrators 12
 - For End Users. 12
 - Accessing the Welcome Web Site 12
 - Getting Around the Welcome Web Site. 13
 - Navigating the Welcome Web Site 13
 - Viewing Product Details and Accessing Web-based Administration Utilities 14
 - Modifying Preferences 14
 - Specifying an Alternate Default Home Page 15
 - What's Next. 15

- 3 NetWare 6.5 Administration Utilities** **17**
 - iManager 17
 - Accessing iManager 18
 - ConsoleOne 18
 - Accessing ConsoleOne 19
 - DirXML 19
 - Novell Remote Manager 19
 - Accessing Novell Remote Manager. 20
 - Remote Server Management (RConsoleJ). 21
 - Accessing RConsoleJ. 21
 - OpenSSH. 21
 - Accessing OpenSSH 22
 - Apache Manager 23
 - Accessing Apache Manager 24
 - What's Next. 24

- 4 Common Administrative Tasks** **25**

- A Supported Web Browsers** **41**
 - Supported Web Browser and Platform Combinations 41
 - Supported End User Components 42
 - Supported Administration Components. 42
 - Administration Utilities Accessible through the NetWare 6.5 (Secure) Welcome Web Site. 42
 - Novell Remote Manager Features 43
 - Supported iManager Features 44

- B Documentation Updates** **47**

About This Guide

This guide describes the administration options available to you with Novell® NetWare® 6.5. It is intended for network administrators and is divided into the following sections:

- ♦ Chapter 1, “Overview: NetWare 6.5 Administration Utilities,” on page 9
- ♦ Chapter 2, “NetWare 6.5 Welcome Web Site,” on page 11
- ♦ Chapter 3, “NetWare 6.5 Administration Utilities,” on page 17
- ♦ Chapter 4, “Common Administrative Tasks,” on page 25
- ♦ “Documentation Updates” on page 47

Additional Documentation

For more information about NetWare 6.5, see these Web sites:

- ♦ NetWare 6.5 Product Web site (<http://www.novell.com/products/netware>)
- ♦ NetWare 6.5 Documentation Web site (<http://www.novell.com/documentation/nw65>)
- ♦ Novell Support Web site (<http://support.novell.com>)
- ♦ Novell Cool Solutions Communities (<http://www.novell.com/cool solutions>)

Documentation Conventions

In this documentation, a greater-than symbol (>) is used to separate actions within a step and items within a cross-reference path.

A trademark symbol (®, ™, etc.) denotes a Novell trademark. An asterisk (*) denotes a third-party trademark.

When a single pathname can be written with a backslash for some platforms or a forward slash for other platforms, the pathname is presented with a backslash. Users of platforms that require a forward slash, such as Linux* or UNIX*, should use forward slashes as required by your software.

User Comments

We want to hear your comments and suggestions about this manual and the other documentation included with NetWare 6.5. To contact us, use the User Comments feature at the bottom of any page in the online documentation.

1

Overview: NetWare 6.5 Administration Utilities

NetWare® 6.5 includes several administration utilities that let you manage everything in your network from configuring and managing Novell® eDirectory™ to setting up network services and open source software such as Apache and Tomcat.

To help you get started, the new NetWare 6.5 Welcome Web site includes information about many of these administration utilities and the software they manage. An end-user version of the Welcome Web site, available on the unsecure port 80, describes many of the Novell products available to them and offers links to documentation. An administrator version (available on the secure port 2200) also describes the products, but includes active links to many of the administration utilities.

This section contains the following information:

- ◆ [“About NetWare 6.5 Administration Utilities” on page 9](#)
- ◆ [“About the NetWare 6.5 Welcome Web Site” on page 9](#)
- ◆ [“What’s Next” on page 10](#)

About NetWare 6.5 Administration Utilities

Some administration utilities, such as ConsoleOne®, are applications that rely on their own set of APIs and can be run on specified platforms. Other utilities are Web based and require the use of a Web browser. Not all of these utilities run on all Web browsers. For more information, see [Appendix A, “Supported Web Browsers,” on page 41](#).

The purpose of the Web-based administration utilities is the flexibility inherent in using a Web browser, namely that you can manage your software from remote locations, and that tasks can be performed from many different platforms, provided those platforms support the correct Web browsers.

Some tasks can only be performed using a specific utility, while other tasks can be performed using one of several utilities. For detailed information about which tool is recommended for various tasks, see [Chapter 4, “Common Administrative Tasks,” on page 25](#).

About the NetWare 6.5 Welcome Web Site

The NetWare 6.5 Welcome Web site is a collection of Web pages installed to your server that contain information about each of the products included with NetWare 6.5 and provides access to Web-based management tools, product information, and documentation.

The purpose of the Welcome Web site is to save you time and effort by introducing each NetWare product and providing easy access to all Web-based administration utilities, such as iMonitor and Novell Remote Manager.

For more information about the Welcome Web site, how to access and use it, see [Chapter 2, “NetWare 6.5 Welcome Web Site,”](#) on page 11.

What’s Next

- ◆ The quickest way to become oriented to NetWare 6.5 is to access the Welcome Web site. For an overview, see [Chapter 2, “NetWare 6.5 Welcome Web Site,”](#) on page 11.
- ◆ If you want to learn how to access one of the more common administration utilities, such as Novell Remote Manager or iManager, see [Chapter 3, “NetWare 6.5 Administration Utilities,”](#) on page 17.
- ◆ If you have specific tasks that you need to get to work on and you’re not sure which utility to use, see [Chapter 4, “Common Administrative Tasks,”](#) on page 25.
- ◆ For information about which administration utilities or features run on which combinations of platforms and Web browsers, see [Appendix A, “Supported Web Browsers,”](#) on page 41.

2

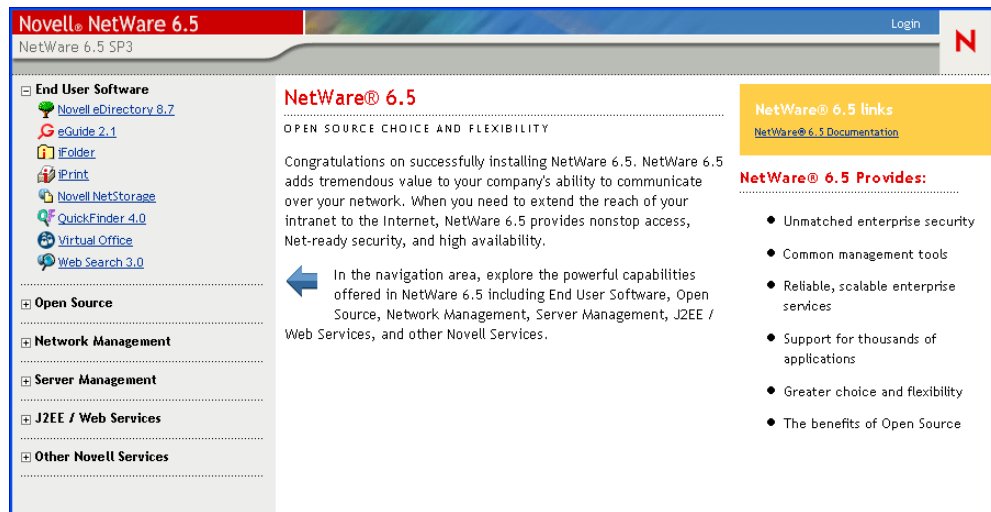
NetWare 6.5 Welcome Web Site

The NetWare® 6.5 Welcome Web site is a collection of Web pages installed to your server that contain information about each of the products included with NetWare 6.5 and provides access to Web-based management tools, product information, and documentation. The purpose of the Welcome Web site is to save you time and effort by introducing each NetWare product and providing easy access to all Web-based administration utilities, such as iMonitor and Novell Remote Manager.

- ◆ “About the Welcome Web Site” on page 11
- ◆ “Accessing the Welcome Web Site” on page 12
- ◆ “Getting Around the Welcome Web Site” on page 13
- ◆ “Specifying an Alternate Default Home Page” on page 16
- ◆ “What’s Next” on page 16

About the Welcome Web Site

The Welcome Web site is for both administrators and end users. Administrators log in to the Welcome Web site and have access to additional features that end users do not.



The Welcome Web site provides the following benefits:

- ◆ Overview information about each NetWare 6.5 product
- ◆ Access to additional product information on www.novell.com
- ◆ Access to product documentation on www.novell.com/documentation
- ◆ Access to Web-based administration utilities (administrators only)

For Administrators

For administrators, the Welcome Web site is accessed using the secure protocol (https) and the secure port 2200. This version of the Web site serves as more than a source of product information. It serves as an administration server, offering additional features that the end user Web site does not, such as access to Web-based administration utilities.

If a product has not yet been installed, the NetWare 6.5 Links box includes a link for installing the product. When clicked, it launched iManager. From there, you can install the product.

NOTE: In some cases, after running a post install of a product, the Welcome Web site is not updated to indicate that the product has been installed. Some Novell products, such as Novell® GroupWise® and ZENworks®, are not fully integrated with the Welcome Web site. Therefore, after you install them, you must restart the Web server for the message to be updated. For information about how to restart the Web server, see the *Apache Web Server Administration Guide for NetWare 6.5*.

From this secure version of the Welcome Web site, administrators can also modify administration server preferences such as the port number assigned to the secure version of the Welcome Web site.

For End Users

For end users, the Welcome Web site serves primarily as a source of information to help them become familiar with the features available to them. End users access the Web site using the unsecure protocol (http) and the standard port 80. This version of the Web site offers information about each product, links to documentation, and information about which products have not yet been installed.

Accessing the Welcome Web Site

Accessible through any Web browser that has a working TCP connection to your network, the Welcome Web site can be accessed by entering the server's URL or IP address.

To access the administrator's Welcome Web site:

- 1** Open a Web browser that has a TCP connection to the network where the NetWare 6.5 server is installed.
- 2** Enter the URL to the server using the secure HTTPS protocol and specifying port 2200.

For example:

```
https://myserver.mycompany.com:2200
```

or

```
https://192.100.21.100:2200
```

- 3** When prompted, enter your administrator username and password.

To access the end user Welcome Web site:

- 1 Open a Web browser that has a TCP connection to the network where the NetWare 6.5 server is installed.
- 2 Enter the URL to the server using the standard HTTP protocol.

For example:

`http://myserver.mycompany.com`

or

`http://192.56.71.100`

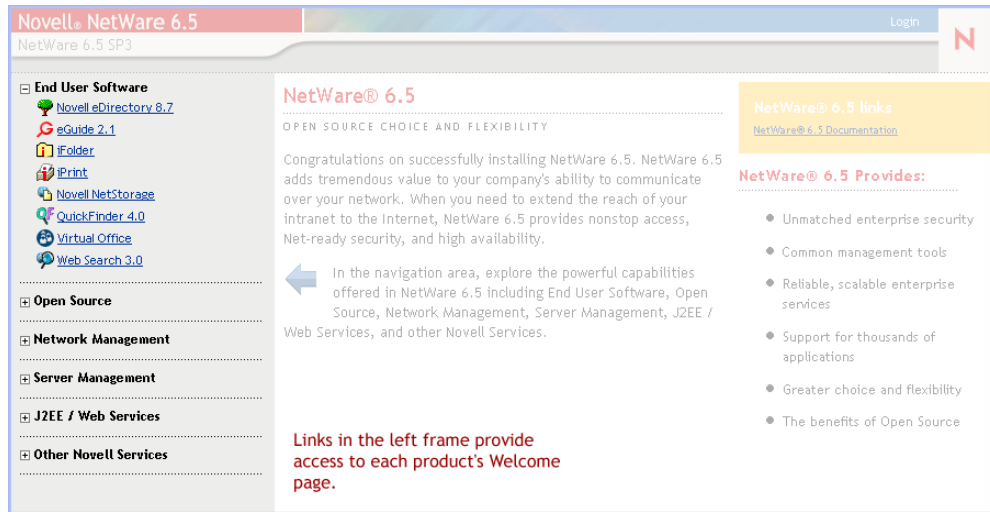
Because the end user Web site uses the standard port 80, there is no need to specify the port number.

Getting Around the Welcome Web Site

The Welcome Web site's home page is organized by three frames: a banner frame, a navigation frame on the left, and a main viewing frame in the center.

Navigating the Welcome Web Site

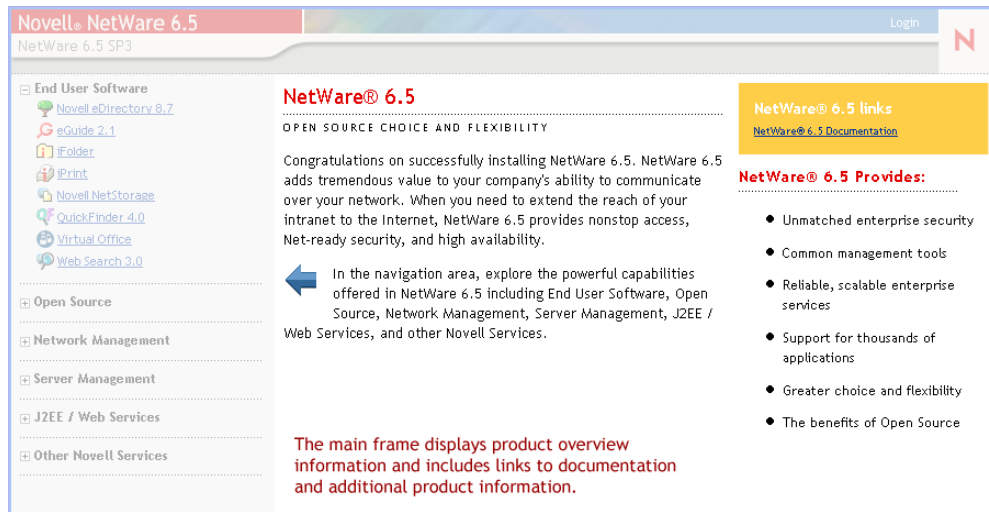
The left frame of the Welcome Web site provides a method for navigating between each product's Welcome page. Products are grouped by specific categories. For example, the second category, Open Source, contains links to each of the open source products included with NetWare 6.5: Apache, MySQL*, OpenSSH, and Tomcat.



To view a specific product's Welcome page, click a product link in the left frame to view the corresponding product Welcome page in the right frame.

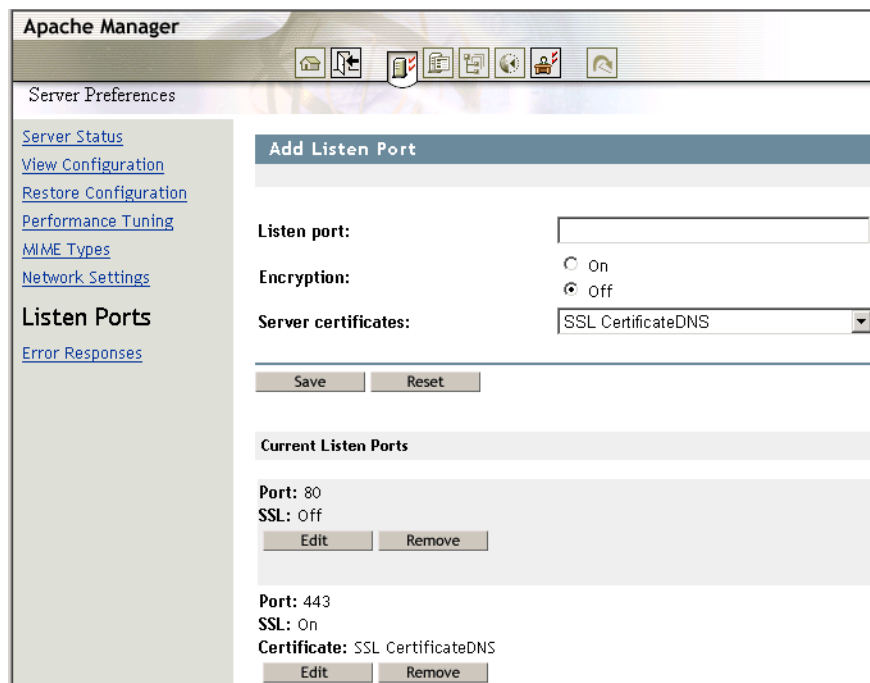
Viewing Product Details and Accessing Web-based Administration Utilities

The main frame provides product overview information and the sidebar includes product highlights. The NetWare 6.5 Links box in the upper right corner provides links to additional product information, product documentation, and Web-based administration utilities (available on the administration version of the Welcome Web site only).



Modifying Preferences

Using the administration version of the Welcome Web site, administrators can modify preferences on a single server or multiple servers, such as specifying the port number, enabling or disabling encryption, and viewing access and error log information to help them discern performance and security issues.



To access preferences:

- 1 Using a Web browser, access the administrator's (secure) Welcome Web site.
- 2 Click Open Source in the left navigation frame, then click Apache 2.0.
- 3 In the Apache 2.0 Link box in the upper-right corner of the page, click Administer Single Apache Server or Administer Multiple Apache Servers.

Specifying an Alternate Default Home Page

If you know which of the products you have installed will be used the most, you can select that product's Welcome page (or utility) as the default home page for the Welcome Web site. When users access the Welcome Web site on port 80 (unsecure), they won't have to navigate to that page.

For example, if you installed the NetWare Web Search Server, you could select it as the default home page. When users access the Welcome Web site, the Web Search form appears allowing them to perform searches on your Web and file server content.

TIP: For more information about Web Search, see the [NetWare 6.5 Web Search Server Administration Guide](#).

NOTE: If you are using Netscape* version 7.02 and you specify an alternate home page, you must clear your browser's cache before the new home page can be viewed. This might also be true of some versions of Internet Explorer.

To specify an alternate default home page:

- 1 Using a Web browser, access the administrator's (secure) Welcome Web site.
- 2 Under Default Page, click the radio button of the Novell product or service that you want to set as the new default Welcome Web site home page (unsecure port 80).

NOTE: Not all products can be specified as the default home page. Of those products that can, only those that have been installed appear in this list. If you do not see a product listed that you would like to set as the default home page, verify that it is installed by going to its Welcome page. If it is not installed, install it and then return to the Welcome Web site.

- 3 Click Set Page.
- 4 Click the link that appears to open the new default home page in a new browser window.

What's Next

For an introduction to some of the key Web-based administration utilities, see [Chapter 3, "NetWare 6.5 Administration Utilities,"](#) on page 17.

For information about which Web-based administration tool to use for specific administrative tasks, see [Chapter 4, "Common Administrative Tasks,"](#) on page 25.

3

NetWare 6.5 Administration Utilities

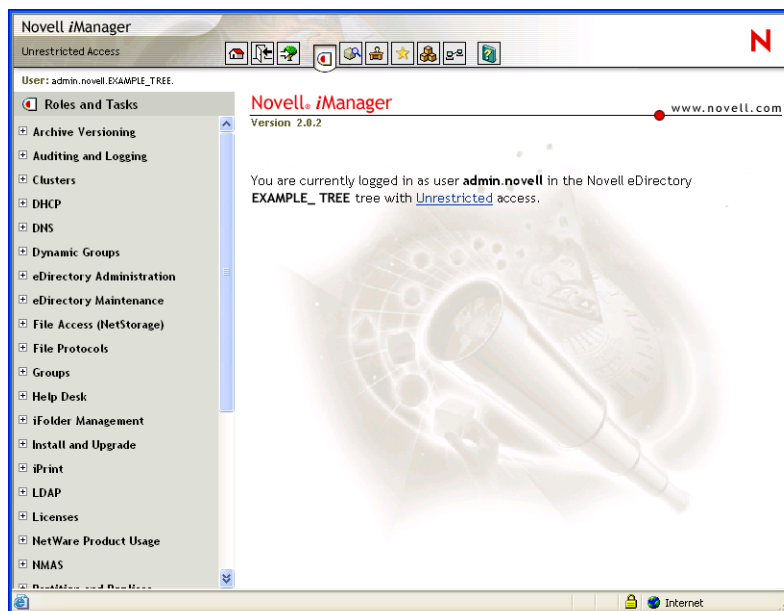
This section provides an overview of the primary administration utilities available to manage your Novell® NetWare® 6.5 server and key software components.

- ◆ “iManager” on page 17
- ◆ “ConsoleOne” on page 18
- ◆ “DirXML” on page 19
- ◆ “Novell Remote Manager” on page 20
- ◆ “Remote Server Management (RConsoleJ)” on page 22
- ◆ “OpenSSH” on page 22
- ◆ “What’s Next” on page 25

iManager

Novell iManager 2.02 is a Web-based network management application that you can use to:

- ◆ Manage your NetWare 6.5 server and environment
- ◆ Configure network services
- ◆ Set up and manage your Novell eDirectory™ tree
- ◆ Create and manage eDirectory objects



Multiple Novell products and components use iManager plug-ins. For more information about plug-in options, see the specific documentation about the Novell product or component you are using.

We recommend using iManager with Internet Explorer 6 or later or Netscape 7 or later.

For more information about iManager, see the *Novell iManager 2.0.x Administration Guide*.

Accessing iManager

You can access iManager by either entering the correct URL in a Web browser.

To start iManager by entering the correct URL, open a Web browser and enter either the IP address or DNS name of the server, followed by /nps/iManager.html. For example:

```
http://172.16.135.150/nps/iManager.html
```

or

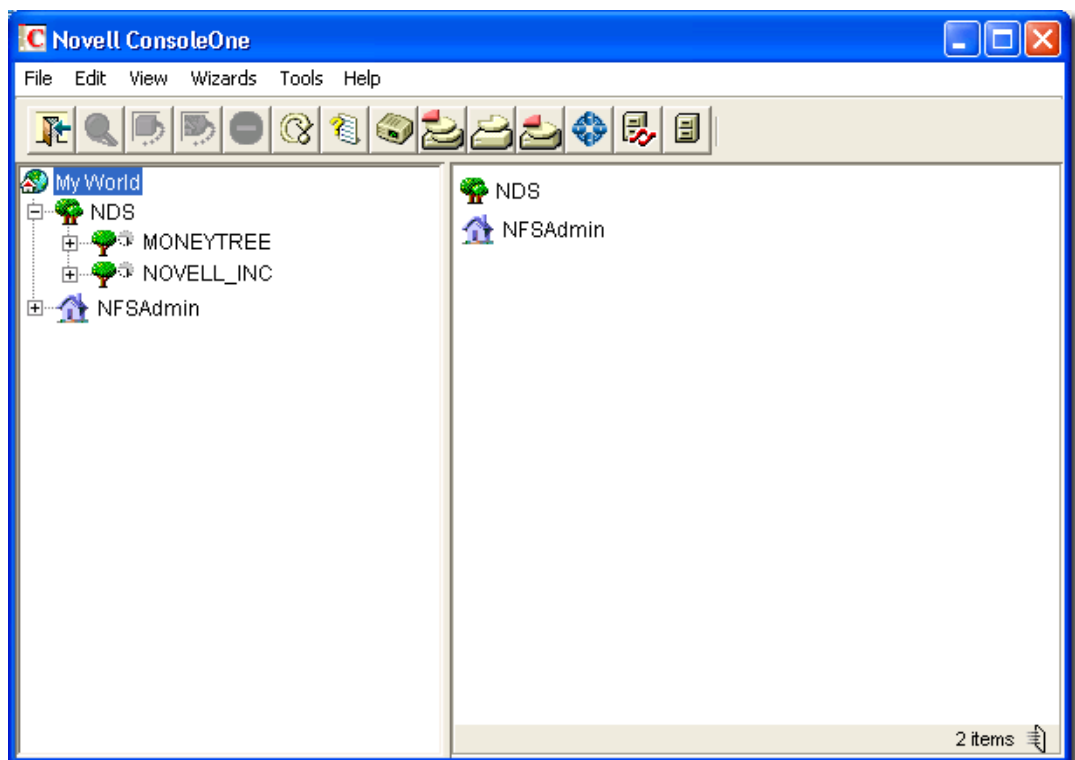
```
http://myserver.mycompany.com/nps/iManager.html
```

ConsoleOne

ConsoleOne[®] is a Java* based tool for managing your network and its resources.

Although iManager is the preferred management tool, you can also use ConsoleOne to manage the following:

- ◆ Novell eDirectory objects, schema, partitions, and replicas
- ◆ NetWare server resources



Multiple Novell products use ConsoleOne snap-ins. For more information on snap-in options, see the specific documentation about the Novell product you are using.

For more information about ConsoleOne, see the *ConsoleOne 1.3.x User Guide*.

Accessing ConsoleOne

To access ConsoleOne from a client workstation, map a drive letter to your NetWare 6.5 server and run ConsoleOne.exe stored in the *volume:\PUBLIC\mgmt\ConsoleOne\1.2\bin* directory.

DirXML

Novell DirXML[®] provides integration services that universally connect your applications, data stores and network platforms—even across technical and organizational boundaries—and enable those resources to work together as one Net.

The Novell DirXML Starter Pack provides

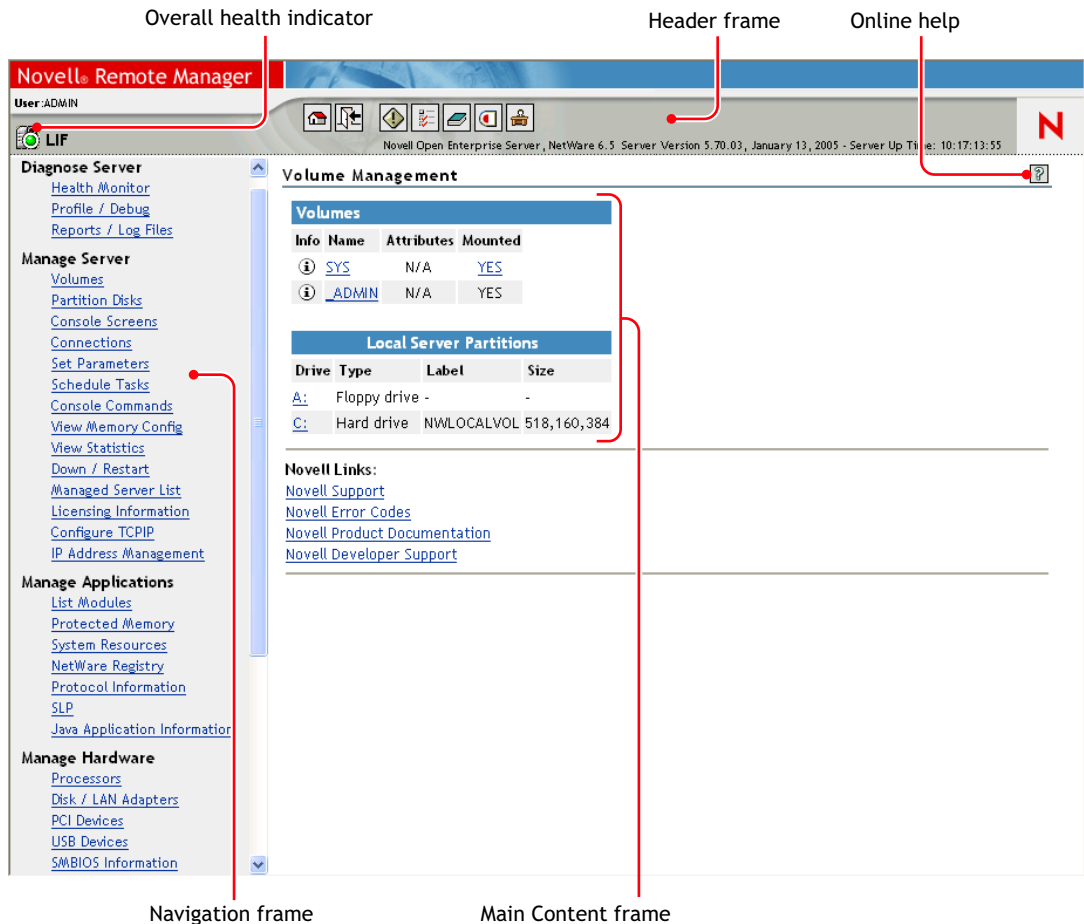
- ◆ User account synchronization between eDirectory, NT Domains, and Active Directory.
- ◆ Password synchronization across these environments.
- ◆ The flexibility to choose the technology that meets your business needs without the headaches of managing a mixed environment.
- ◆ The foundation to build out a complete secure identity management solution.

For more information about DirXML, see the [DirXML Documentation Web site \(http://www.novell.com/documentation/dirxml11a/index.html\)](http://www.novell.com/documentation/dirxml11a/index.html).

Novell Remote Manager

Novell Remote Manager (portal.nlm) is a browser-based utility that you can use to manage your NetWare servers from any network workstation running Netscape 4.5 or later or Internet Explorer 6 or later.

Use Novell Remote Manager to monitor your server's health, change the configuration of your server, or perform diagnostic and debugging tasks.



For more information, see the *NetWare 6.5 Novell Remote Manager Administration Guide for NetWare*.

Accessing Novell Remote Manager

You can access Novell Remote Manager by either entering the correct URL in a Web browser or clicking the link to it on the Welcome Web page.

To access Novell Remote Manager from a Web browser, enter either the IP address or DNS name of the server, followed by port :8008. For example:

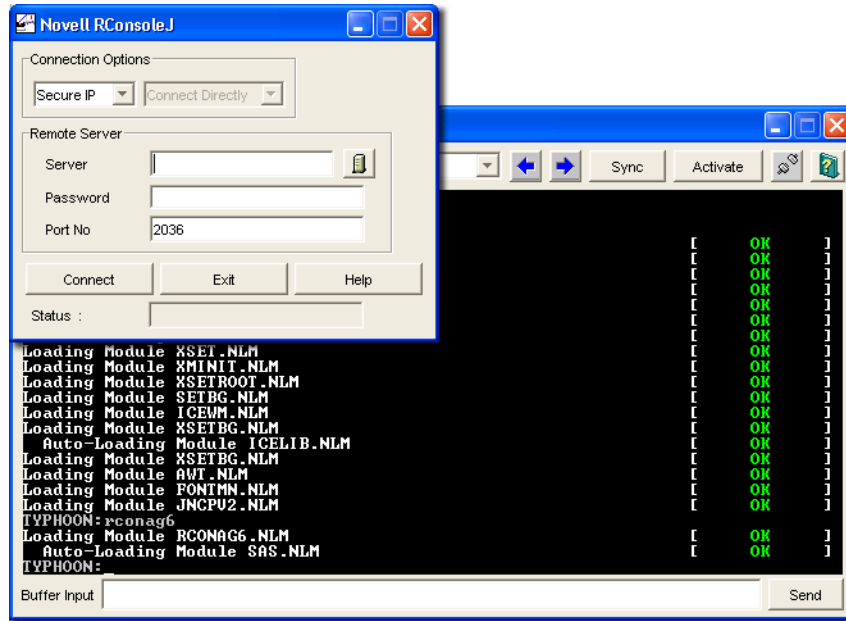
`http://192.16.135.150:8008`

or

`http://myserver.mycompany.com:8008`

Remote Server Management (RConsoleJ)

RConsoleJ lets you use a network workstation to control and manage a remote NetWare server. You can lock servers in a safe place, remove keyboards and monitors, and then start a remote control session from a workstation whenever you need to access a server's console.



For more information, see the *NetWare 6.5 Remote Server Management Administration Guide*.

Accessing RConsoleJ

To access RConsoleJ from a client workstation, map a drive letter to your NetWare 6.5 server and run rconj.exe stored in the *volume:\PUBLIC\mgmt\ConsoleOne\1.2* directory.

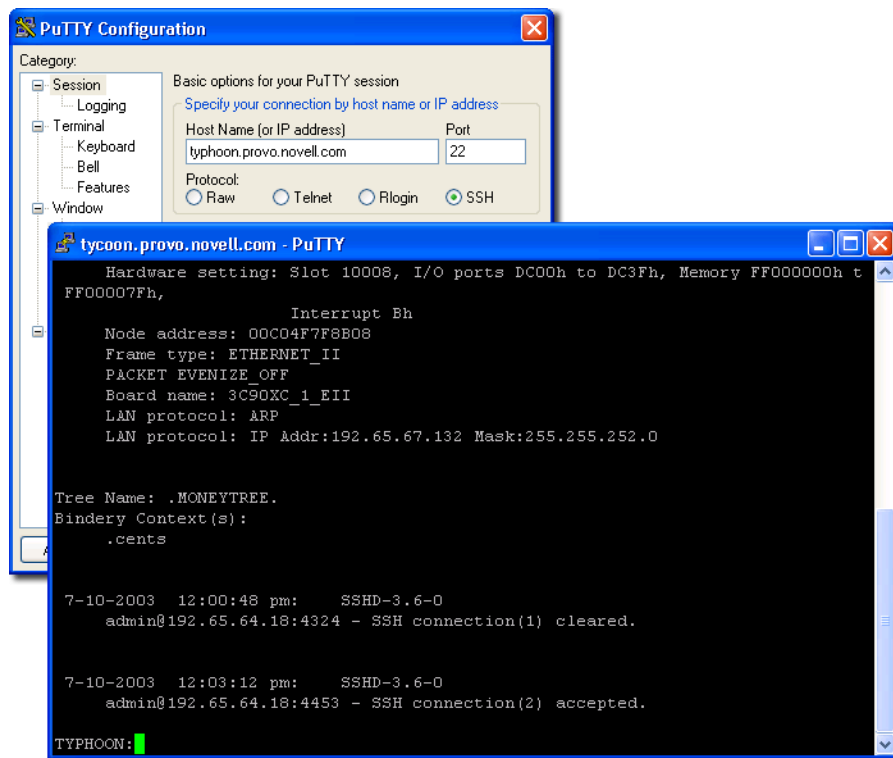
When prompted, enter your server's IP address or DNS name (with no leading http or https) and your administrator password, and then click Connect.

OpenSSH

OpenSSH is an open source technology that has been integrated with NetWare. It provides a secure shell that uses encryption provided by Novell International Cryptographic Infrastructure (NICI) technology rather than SSL to implement 128-bit (and stronger) encryption and contains fewer software import liabilities.

OpenSSH encrypts all traffic (including passwords) to effectively eliminate eavesdropping, connection hijacking, and other network-level attacks. Additionally, OpenSSH provides a myriad of secure tunneling capabilities.

To use OpenSSH from a workstation in your network, you must download one of several available third-party SSH utilities, such as PuTTY*. For more information, see “[Setting Up SSH at Workstations](#)” in the *OpenSSH Administration Guide for NetWare 6.5*.



Accessing OpenSSH

To use OpenSSH on NetWare, you must first install it (if it isn't already installed), and then you must load `sshd.nlm` at the system console.

Then, install and run an SSH-compliant client on a workstation in your network. These can be downloaded from the World Wide Web. Some SSH-compliant clients include:

- ◆ PuTTY (tested with NetWare 6.5)
- ◆ MindTerm
- ◆ AbsoluteTelnet*
- ◆ Red Hat* Linux* OpenSSH clients (tested with NetWare 6.5)

You need to know your server's IP address or DNS name as well as your server administrator's username and password.

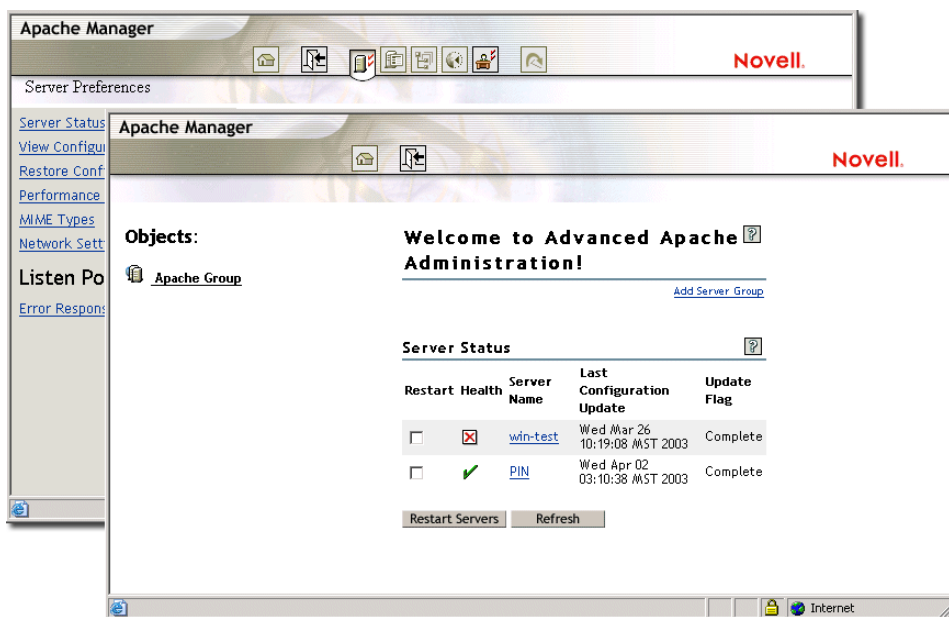
Apache Manager

Whereas other platforms require you to manually edit configuration files to configure Apache, NetWare 6.5 includes a simple, Web-based graphical user interface that updates the configuration files for you: Apache Manager.

If you have multiple instances of Apache running on various platforms in your network—sometimes called a server farm—you can control them all from the Multiple Server Administration pages of Apache Manager, giving you single-point access to, and control over, all of your Web servers.

Apache Manager offers many advantages over manually configuring Apache:

- ◆ Changes to directives are done electronically, reducing the risk of errors.
- ◆ You don't have to know all of the Apache directives or modules to configure Apache.
- ◆ You can manage multiple installations of the Apache Web server from a single interface.
- ◆ Apache Manager eliminates the need to edit and maintain a large number of configuration files where many of the same directives are being used on each Apache Web server.
- ◆ You are provided with a thorough help system that includes hypertext links to this manual (*Apache Web Server Administration Guide for NetWare 6.5*), and to specific topics within the official Apache documentation set on [apache.org](http://www.apache.org) (<http://www.apache.org>).



Accessing Apache Manager

To access Apache Manager from the secure Welcome Web site:


- 1** Open the secure version of the NetWare 6.5 Welcome Web site using your server's URL.

For example:

```
https://myserver.mycompany.com:2200
```

or

```
https://192.43.89.100:2200
```

- 2** When prompted, enter your administrator username and password and click Login.
- 3** In the left frame of the NetWare 6.5 Welcome Web site home page, click the  next to Open Source and click Apache 2.0.
- 4** After the Apache 2.0 Welcome page loads, click Administer Single Apache Server under Apache 2.0 Links in the upper right corner of the right frame.

What's Next

For a comprehensive list of the documentation for all NetWare 6.5 products, utilities, and services, see the [NetWare 6.5 Documentation Web site \(http://www.novell.com/documentation/nw65\)](http://www.novell.com/documentation/nw65).

4

Common Administrative Tasks

The following table shows some of the common items that you could manage in your network when using NetWare® 6.5 and the tasks associated with the item. The table then shows the utility that Novell® recommends to perform the task and where you can get more information about the tasks and utility.

If you have further questions about a utility or the purpose of a NetWare Loadable Module™ (NLM™), see the *NetWare 6.5 Utilities Reference* and the *NLM Reference for NetWare 6.5*.

Item to Manage	Task	Recommended Utility	For More Information See
Novell eDirectory™ - Users	Create, delete, or modify a User	iManager 2.02 > Users	<i>"Managing Objects"</i> in the <i>Novell eDirectory 8.7.3 Administration Guide</i>
	Enable or disable a user account.		
Novell eDirectory - Groups	Create, delete, or modify a Group	iManager 2.02 > Groups or ConsoleOne® 1.3 or later	<i>"Managing Objects"</i> in the <i>Novell eDirectory 8.7.3 Administration Guide</i>
Novell eDirectory - Dynamic Groups	Create, delete, or modify a Dynamic Group	iManager 2.02 > Dynamic Groups	Appnote article "How to Manage and Use Dynamic Groups in Novell eDirectory" (http://developer.novell.com/research/appnotes/2002/april/05/a020405.htm)
	Create Extended Object	Command-line commands	
Novell eDirectory - Objects	Copy, create, delete, modify, move, rename an eDirectory object	iManager 2.02 > eDirectory Administration	<i>"Managing Objects"</i> in the <i>Novell eDirectory 8.7.3 Administration Guide</i>
Novell eDirectory - LDAP objects	Create or delete LDAP objects	iManager 2.02 > LDAP or ConsoleOne 1.3 or later	<i>"Understanding LDAP Services for Novell eDirectory"</i> and <i>"Configuring LDAP Services for Novell eDirectory"</i> in the <i>Novell eDirectory 8.7.3 Administration Guide</i>
	LDAP Overview		

Item to Manage	Task	Recommended Utility	For More Information See
Novell eDirectory - Partition and Replicas	Create Partition	iManager 2.02 > Partition and Replicas	“Managing Partitions and Replicas” in the <i>Novell eDirectory 8.7.3 Administration Guide</i>
	Merge Partition	or	
	Move Partition	ConsoleOne 1.3 or later	
	Replica View		
	View Partition Information		
	Filtered Replica Wizard		
Novell eDirectory - Rights	Modify Inherited Rights Filter	iManager 2.02 > Rights	iManager 2.02 Online help and “Administering Rights” in the <i>ConsoleOne 1.3.x User Guide</i>
	Modify Trustees		
	Rights To Other Objects		
	View Effective Rights		
Novell eDirectory - Schema	Add Attribute	iManager 2.02 > Schema	“Managing the Schema” in the <i>Novell eDirectory 8.7.3 Administration Guide</i>
	Attribute Information	or	
	Class Information	Schema Manager in ConsoleOne 1.3	
	Create Attribute		
	Create Class		
	Delete Attribute		
	Delete Class		
Object Extensions			
Novell eDirectory - WAN Traffic	Create LAN Area	WANMAN Plug-in for iManager 2.02 > WAN Traffic	“WAN Traffic Manager” in the <i>Novell eDirectory 8.7.3 Administration Guide</i>
	Delete LAN Area	or	
	WAN Traffic Management Schema	WANMAN Snap-in for ConsoleOne 1.3 or later	
	WAN Traffic Manager Overview		
Novell eDirectory - Simple Network Management Protocol (SNMP)	Create Object	iManager 2.02 > SNMP	“Monitoring eDirectory Using SNMP” in the <i>Novell eDirectory 8.7.3 Administration Guide</i>
	Delete Object		
	Configure Traps	The dssnmpps utility present in the sys:\etc\ directory	“Monitoring eDirectory Using SNMP” in the <i>Novell eDirectory 8.7.3 Administration Guide</i>
	Configure Master Agents	inetcfg.nlm	“Installing and Configuring SNMP Services for eDirectory” in the <i>Novell eDirectory 8.7.3 Administration Guide</i>

Item to Manage	Task	Recommended Utility	For More Information See
eDirectory Maintenance	Backup Backup Configuration Import Convert Export Wizard Index Management View a Log file Graft, merge, or rename a tree Basic repair or repair replica, replica ring, server, or sync or perform repair operations via iMonitor Restore Schema Maintenance Service Manager	iManager 2.02 > eDirectory Maintenance or Console 1.3 or later	“Backing Up and Restoring Novell eDirectory” , “Novell eDirectory Management Utilities” , “Repairing the Novell eDirectory Database” , and “Merging Novell eDirectory Trees” sections in the <i>Novell eDirectory 8.7.3 Administration Guide</i>
User Access - CIFS / AFP, NFS	Configure and manage	iManager 2.02 > File Protocols > CIFS/AFP or NFS* or ConsoleOne 1.3 or later or Novell Remote Manager	NetWare 6.5 Native File Access Protocols Guide
User Access - FTP	Configure and manage	iManager 2.02 > File Protocols > FTP Command line commands: ♦ <code>start server nwftpd</code> ♦ <code>get stats ftpstat</code> Configuration file ftpserv.cfg Default port 21 Set parameters	“Configuring NetWare FTP Server” and “Managing and Administering” in the <i>NetWare 6.5 FTP Server Administration Guide</i>

Item to Manage	Task	Recommended Utility	For More Information See
User Access - Novell Client	Manage rights, passwords, user connections	N icon on the Windows* status bar, Network Neighborhood, or Windows Internet Explorer	<i>Novell Client for Windows Installation and Administration Guide</i>
User Access - login	Manage login scripts	Novell iManager 2.02 or ConsoleOne 1.3 or later	<i>Novell Login Scripts Guide</i>
User Access - NetDrive	Access files on the server maintained by Novell iFolder® or NetStorage	Netdrive.exe	“NetDrive” in the <i>Novell iFolder 2.1 Installation and Administration Guide</i>
User Access - passwords	Clear Lockout Create User Set Password	iManager 2.02 > Help Desk	iManager 2.02 online help
User Access - Universal Password	Manage universal passwords	Novell iManager 2.02 > NMAS™	“Password Management” in the <i>Novell Modular Authentication Service Administration Guide</i>
User Identity - Netidentity in DirXML®	Set up password synchronization	Novell iManager 2.02 > DirXML	<i>DirXML Starter Pack Installation Guide for NetWare 6.5</i> (http://www.novell.com/documentation/dirxmlstarterpack/jetset/data/front.html)
Users identity - Novell eGuide	Manage	eGuide Administration Utility http://web_server/eGuide/admin/index.html Replace web_server with the hostname or IP address of the Web server where you installed eGuide. The port number might be required as well.	“eGuide Configuration” in the <i>Novell eGuide 2.1.2 Administration Guide</i>
User storage - iFolder	Manage	iFolder Management Console	“Using the iFolder Management Console to Configure Your iFolder System” in the <i>Novell iFolder 2.1 Installation and Administration Guide</i>
User storage - NetStorage	Manage	iManager 2.02 > NetStorage	“Administering NetStorage” in the <i>NetWare 6.5 NetStorage Administration Guide</i>

Item to Manage	Task	Recommended Utility	For More Information See
User Storage - Novell Storage Services	Manage logical file services	iManager 2.02 > Storage and ConsoleOne 1.3 or later and NSSMU and Novell Remote Manager and Virtual File Services (VFS) and Scripts	"Management Utilities for NSS" in the <i>Novell Storage Services Administration Guide for NetWare 6.5</i> and <i>Virtual File Services for NetWare</i> (http://developer.novell.com/ndk/doc/vfs/vfs__enu/data/h5ubo7tt.html)
User Storage - Traditional File System	Manage traditional file system	ConsoleOne 1.3 or later Novell Remote Manager	"Configuring and Managing Traditional File System" in the <i>NetWare 6.5 Traditional File Services Administration Guide</i>
User Storage - Novell Cluster Services™	Migrating resources, identifying cluster resource states	ConsoleOne 1.3 Novell Remote Manager	"Managing Novell Cluster Services" in the <i>Novell Cluster Services Overview and Installation for NetWare 6.5</i>
	Manage	Command line commands at the System Console prompt	"Novell Cluster Services Console Commands" <i>Novell Cluster Services Overview and Installation for NetWare 6.5</i>
	Customize management	Virtual File Services for NetWare via the cma.nlm	<i>Virtual File Services for NetWare</i> (http://developer.novell.com/ndk/doc/vfs/vfs__enu/data/h5ubo7tt.html)
User Storage - iSCSI	Manage	Novell Remote Manager or console commands	"Managing iSCSI" <i>iSCSI 1.0 Administration Guide for NetWare 6.5</i>
User Storage - Archive/Version Management	Start services	arkstart.nlm Load at the System Console prompt	"Installing and Configuring Archive Servers" in the <i>Novell Archive and Version Services 2.0 Administration Guide for NetWare 6.5</i>
	Configure jobs	Edit sys:\etc\arkConfig.xml	"Configuring Versioning Jobs with iManager (NetWare 6.5 SP2)" in the <i>Novell Archive and Version Services 2.0 Administration Guide for NetWare 6.5</i>
	Job Control View Log	iManager 2.02 > Archive/Version Management plug-in	"Managing the Archive Server" in the <i>Novell Archive and Version Services 2.0 Administration Guide for NetWare 6.5</i>

Item to Manage	Task	Recommended Utility	For More Information See
Print Services - iPrint	Create Broker, Printer, or Print Manager objects Delete Print object Enable auditing or iPrint support Manage Brokers, Printers, or Print Managers Configure Printer Pool or RPM Shut down and start up printer agents Install printers on workstations automatically Set configuration locks or print job spooling Support queue-based client workstations	iManager 2.02 > iPrint	“Managing Your Print System” in the <i>iPrint Administration Guide for NetWare 6.5</i>
Print Services	Configure remote printers Modify print jobs Use remote printer management Set up printer configurations Create configurations Optimize Event Notification Enable Event Notification Delivery methods Enable and disable Brokered services Reconfigure a Broker	NetWare Administrator	“Managing Your Print System” in the <i>iPrint Administration Guide for NetWare 6.5</i>
Print Services	Monitor Broker Health	Novell Remote Manager	“Accessing the Broker Health Monitor” in the <i>iPrint Administration Guide for NetWare 6.5</i>
Novell Licensing	Set up and manage licenses and properties	iManager 2.02 > Licenses	“Managing Licensing and Certificates” in the <i>Novell Licensing Services Administration Guide for NetWare 6.5</i>
	Monitor licensing information and components	Novell Remote Manager	“Viewing Licensing Information” in the <i>Novell Licensing Services Administration Guide for NetWare 6.5</i>
	Monitor Licensing service events	snmp.nlm	“Viewing Licensing Information” in the <i>Novell Licensing Services Administration Guide for NetWare 6.5</i>

Item to Manage	Task	Recommended Utility	For More Information See
Server Install and Upgrade	Automate an Installation	Response File Generator or iManager 2.02 (click Install and Upgrade > Automate an Installation)	“Using the Response File Generator” in the <i>NetWare 6.5 Response File Installation Guide</i>
	Install NetWare 6.5 Products	NetWare Deployment Manager or The Install Option on the X Server Graphical Console or iManager 2.02 (click Install and Upgrade > Remote Install Utility)	“Installing Products and Updates” in the <i>NetWare 6.5 Overview and Installation Guide</i>
Install or Upgrade a Cluster Prepare Cluster for Upgrade	NetWare Deployment Manager or iManager 2.02 (click Install and Upgrade > Install or Upgrade a Cluster link or Prepare Cluster for Upgrade)	“Installation and Setup” in the <i>Novell Cluster Services 1.7 Administration Guide</i>	
	Rolling cluster requires a verification step using the version of ConsoleOne that ships with NetWare 6.5.		
Migrate a Server	Migration Wizard iManager 2.02 (click Install and Upgrade > Migrate a Server)	NetWare Migration Wizard 8.0 Administration Guide	
Prepare for a new eDirectory	NetWare Deployment Manager or iManager 2.02 (click Install and Upgrade > Prepare for New eDirectory > Extend the Core Schema)	“Preparing the Network with Deployment Manager” in the <i>NetWare 6.5 Overview and Installation Guide</i>	

Item to Manage	Task	Recommended Utility	For More Information See
Server Install and Upgrade (<i>cont'd.</i>)	Prepare a server for an upgrade	NetWare Deployment Manager or iManager 2.02 (click Install and Upgrade > Prepare Server for Upgrade)	“Preparing the Network with Deployment Manager” in the <i>NetWare 6.5 Overview and Installation Guide</i>
	Search tree for eDirectory/ NDS [®] versions	NetWare Deployment Manager or iManager 2.02 (click Install and Upgrade > Search Tree for eDirectory/NDS versions > View and Update NDS)	“Preparing the Network with Deployment Manager” in the <i>NetWare 6.5 Overview and Installation Guide</i>
	Consolidate servers	NetWare Deployment Manager or iManager 2.02 (Click Install and Upgrade > Server Consolidation Utility > Run the Server Consolidation Utility)	“Install the Server Consolidation Utility” in the <i>Novell Server Consolidation Utility 4.0 Administration Guide</i>
	Upgrade to NetWare 6.5	Inplace upgrade - install.exe Remote upgrade iManager 2.02 (Click Install and Upgrade > Upgrade to NetWare 6.5 > Upgrade a Server Remotely)	“Upgrading to NetWare 6.5” in the <i>NetWare 6.5 Overview and Installation Guide</i>
Server - Hot Plug devices	Manage	Novell Configuration Manager Console (ncmcon.nlm)	“Setting Up, Enabling, and Managing PCI Hot Plug” in the <i>NetWare 6.5 Server Operating System Administration Guide</i>
OpenSSH services	Change configuration or options	sys:\etc\ssh\sshd_conf ig file or OpenSSH Manager	“Editing the Configuration File” in the <i>OpenSSH Administration Guide for NetWare 6.5</i>

Item to Manage	Task	Recommended Utility	For More Information See
MySQL Database	Manage <ul style="list-style-type: none"> ◆ User Accounts ◆ Access Privileges ◆ Disaster Prevention and Recovery ◆ Language Reference ◆ Localisation and International Usage ◆ Server-Side Scripts and Utilities ◆ Client-Side Scripts and Utilities ◆ Log Files ◆ Replication 	See the MySQL documentation	MySQL manual (http://www.mysql.com/doc/en/Database_Administration.html)
Pervasive.SQL	Set up and manage	See the online documentation	http://www.pervasive.com/support/technical/psql2k_docs.asp
NetWare Product Usage	Run Usage Report Run Audit Report Configure Service Configure a Server	iManager 2.02 > NetWare Product Usage	“Metering Network and Product Usage” in the <i>Novell Licensing Services Administration Guide for NetWare 6.5</i>
Security - Novell Modular Authentication Services (NMAST [™])	NMAST Login Methods NMAST Login Sequences NMAST Users Universal Password Configuration	iManager 2.02 > NMAST	“Managing Login and Post-Login Methods and Sequences” in the <i>Novell Modular Authentication Services (NMAST) 2.3 Administration Guide</i> .
Security - Novell Certificate Access	View My Certificates View User Certificates	iManager 2.02 > Novell Certificate Access or ConsoleOne 1.3 or later	“Managing Novell Certificate Server” in the <i>Novell Certificate Server 2.7.x Administration Guide</i>

Item to Manage	Task	Recommended Utility	For More Information See
Security - Novell Certificate Server™	Create Certificate Authority Create CRL Object Create SAS service object Create Server Certificate Create Trusted Root Create Trusted Root Container Create User Certificate Issue Certificate	iManager 2.02 > Novell Certificate Server or ConsoleOne 1.3 or later	“Managing Novell Certificate Server” in the <i>Novell Certificate Server 2.7.x Administration Guide</i>
Network and Server Communications - Dynamic Host Configuration Protocol (DHCP)	Configure and manage eDirectory-based DHCP	iManager 2.02 > DHCP or Java based - DNS-DHCP Management Console or Windows > Start > Programs > DNS-DHCP Management Console > DNSDHCP or Click the DNSDHCP shortcut icon created on the desktop or through NetWare Administrator	Novell DNS/DHCP Services for NetWare Administration Guide for NetWare 6.5
Network and Server Communications - Dynamic Naming Services (DNS)	Configure and manage eDirectory-based DNS	iManager 2.02 > DNS or Java based - DNS-DHCP Management Console or Windows > Start > Programs > DNS-DHCP Management Console > DNSDHCP or Click the DNSDHCP shortcut icon created on the desktop or through NetWare Administrator	Novell DNS/DHCP Services for NetWare Administration Guide for NetWare 6.5

Item to Manage	Task	Recommended Utility	For More Information See
Network and Server Communications - DNS/DHCP	Install, upgrade, or repair schema dns/dhcp after a server installation	Dnipinst.nlm	<i>Novell DNS/DHCP Services for NetWare Administration Guide for NetWare 6.5</i>
Network and Server Communications - IPv6	Setup and use	Ip6.cfg Rtadvd.cfg	“Setting Up Novell IPv6” and “Using Novell IPv6 in Your Network” in the <i>Novell IPv6 Administration Guide for NetWare 6.5</i>
Network and Server Communications - IP Addresses	Manage	Inetcfg.nlm at the server console or Novell Remote Manager > Configure TCPIP	“Using the IP Address Management Framework” in the <i>NetWare 6.5 IP Address Management Administration Guide</i>
Network or Server Communications - LAN or WAN Board	Configure	Internetworking Configuration (inetcfg) Hdetect.nlm	“Configuring Boards” in the <i>Novell TCP/IP Administration Guide for NetWare 6.5</i>
Network and Server Communications - TCPIP	Setup <ul style="list-style-type: none"> ◆ Configuring Boards ◆ Enabling TCP/IP ◆ Binding Protocols 	Load inetcfg.nlm at the server console or Novell Remote Manager > Configure TCPIP	“Setting Up” in the <i>Novell TCP/IP Administration Guide for NetWare 6.5</i>
	Configure Protocols	Novell Remote Manager	“Configuring Protocols” in the <i>Novell TCP/IP Administration Guide for NetWare 6.5</i>
	Monitor	Novell Remote Manager > Manage Applications > Protocol Information TPCCON utility (tcpcon.nlm, requires SNMP)	“Managing” in the <i>Novell TCP/IP Administration Guide for NetWare 6.5</i>
	Monitor statistics	Novell Remote Manager	“Web-based TCP/IP Monitoring” in the <i>Novell TCP/IP Administration Guide for NetWare 6.5</i>
Network and Server Communications - IPX™	Manage	Load inetcfg.nlm at the server console	

Item to Manage	Task	Recommended Utility	For More Information See
Servers	Install NetWare 6.5 or upgrade to 6.5	Novell Install NetWare Configuration Utility (nwconfig.nlm)	<i>“Installing a New NetWare 6.5 Server” or “Upgrading to NetWare 6.5” in the NetWare 6.5 Overview and Installation Guide</i>
	Migrate	Novell NetWare Migration Wizard	<i>NetWare Migration Wizard 8.0 Administration Guide</i>
	Consolidate	Novell NetWare Server Consolidation Utility	<i>Novell Server Consolidation Utility 4.0 Administration Guide</i>
	Manage remotely through a browser from a server or client workstation.	Novell Remote Manager (web-based)	<i>NetWare 6.5 Novell Remote Manager Administration Guide for NetWare</i>
	Manage remotely via Java based client from a workstation	RConsoleJ (java based)	<i>NetWare 6.5 Remote Server Management Administration Guide</i>
	Manage remotely via OpenSSH client from another server or workstation	OpenSSH (open source client shell)	<i>OpenSSH Administration Guide for NetWare 6.5</i>
	Manage via perl scripts	Perl scripts, Zend engine, mod_php Apache module	<i>PHP for NetWare (http://developer.novell.com/ndk/php.htm)</i>
Secure the server console	commandline comand secure console	<i>“SECURE CONSOLE” in the NetWare 6.5 Utilities Reference</i>	
Time services (timesync.nlm)	Configure using Set parameters in the Time category Monitor health (Novell Remote Manager > Monitor Health > Timesync status)	<i>“Configuring Timesync on Servers” in the NetWare 6.5 Network Time Management Administration Guide</i>	

Item to Manage	Task	Recommended Utility	For More Information See
Servers (<i>cont'd.</i>)	Network Time protocol (xntpd.nlm)	<p>Configure using command in the sys:\etc\ntp.conf file and loading xntpd.nlm</p> <p>Remote - use NTP Configuration link in Novell Remote Manager.</p> <p>Additional management utilities:</p> <ul style="list-style-type: none"> ◆ NTPDate - set logical time and date ◆ NTPDate - query status or quality time parameters ◆ NTPTrace - query time servers and its servers until master server is queried. ◆ XNTPDC - query the XNTPD daemon about its current state and request changes in that state. ◆ XNTPD - uses setting in the ntp.conf file to set and maintain the system time-of-day in synchronism with Internet standard time servers 	<p>“NTP Configuration”, “NTP Utilities”, and “Monitoring and Security” in the <i>NetWare 6.5 Network Time Protocol Administration Guide</i></p>
Storage Management Services™ (SMS)	SMDR Configuration	iManager 2.02 > SMS	<i>NetWare 6.5 Storage Management Services Administration Guide</i>
	TSA Configuration		
	Back up network data	sbcon.nlm	“Using SBCON” in the <i>Novell SBCON Administration Guide for NetWare 6.5</i>
	Restore network data		

Item to Manage	Task	Recommended Utility	For More Information See
Virtual Office	Services Administration <ul style="list-style-type: none"> ◆ eGuide ◆ e-mail ◆ NetStorage ◆ iPrint ◆ News Environment Administration	iManager 2.02 > Virtual Office Management	“Configuring Virtual Office Services in iManager” in the <i>Novell Virtual Office Configuration Guide</i>
Web Server - Apache	Manage Web Server <ul style="list-style-type: none"> ◆ Preferences ◆ Content ◆ Modules 	Apache Manager	“Managing Apache Web Server Preferences” “Managing Web Server Content”, and “Managing Apache Modules” in the <i>Apache Web Server Administration Guide for NetWare 6.5</i>
Web Server - Tomcat	Manage	Tomcat Admin	“Managing Tomcat with Tomcat Admin” in the <i>Apache Web Server Administration Guide for NetWare 6.5</i>
Web Pages	Generate	Perl scripts, Zend engine, mod_php Apache module	PHP for NetWare (http://developer.novell.com/ndk/php.htm)
Web site search	Manage <ul style="list-style-type: none"> ◆ Creating, enabling, configuring, disabling, or deleting a Virtual Search Server ◆ Creating and managing indexes ◆ Backing up search server files 	NetWare Web Search Manager	“Managing Web Search” in the <i>NetWare 6.5 Web Search Server Administration Guide</i>
Web Services - Universal Description, Discovery and Integration (UDDI)	Administration <ul style="list-style-type: none"> ◆ Add SSL Provider ◆ Server Configuration ◆ Set Rights ◆ Edit Rights ◆ Edit Trustees 	iManager 2.02 > UDDI Administration	“Configuring Novell Nsure UDDI Server” in the <i>Novell Nsure UDDI Server 2.0 Administration Guide</i>
	Search UDDI Entry	iManager 2.02 > UDDI Inquiry	“Using the UDDI Administration Interface” in the <i>Novell Nsure UDDI Server 2.1 Administration Guide</i>

Item to Manage	Task	Recommended Utility	For More Information See
Web Services - Universal Description, Discovery and Integration (UDDI) (<i>cont'd.</i>)	Publish & User Access Control <ul style="list-style-type: none"> ◆ Create UDDI Entry ◆ Modify UDDI Entry ◆ Delete UDDI Entry ◆ Set Rights ◆ Edit Rights ◆ Edit Trustees 	iManager 2.02 > UDDI Publish & User Access Control	<i>“UDDI Publish and User Access Control” in the Novell Nsure UDDI Server 2.1 Administration Guide</i>
	Audit <ul style="list-style-type: none"> ◆ Queries ◆ Query Configuration ◆ Server Configuration 	iManager 2.02 > Nsure™ Audit	<i>Novell Nsure UDDI Server 2.1 Administration Guide</i>
Web Services - J2EE	Manage	Novell exteNd™ Application Server Management Console	<i>Novell exteNd Application Server Administration Guide (http://www.novell.com/documentation/lg/extendas50/docs/helpcore/framesets/admPref.fs.html)</i>

A

Supported Web Browsers

NetWare® 6.5 includes enhanced support for a broad range of Web browsers that can be used to access Web-based administration utilities and end user software.

Because of the great variety of operating system and Web browser combinations, we have had to select which of them to support and we are working continually to expand the list to include the broadest possible choices.

This appendix identifies supported Web browsers (and associated platforms) and includes the following topics:

- ◆ “Supported Web Browser and Platform Combinations” on page 41
- ◆ “Supported End User Components” on page 42
- ◆ “Supported Administration Components” on page 42

Supported Web Browser and Platform Combinations

We have tested our browser-based administration utilities and end user interfaces on the following Web browser and platform combinations.

Table 1 Supported Web Browser and Platform Combinations

Web Browser	Platform
Galeon	Red Hat 9 (running the Ximian® XD2 desktop) and SuSE 8.2 (running the Ximian XD2 desktop)
Internet Explorer 6 or later	Windows 2000 and XP
Mozilla* 1.7 or later	Red Hat* 9 (running the Gnome desktop) and SuSE* 8.2 (running the Gnome desktop), SLES 9 SP1, and Linux Professional 9.2 (running the Gnome desktop)
NetWare GUI Browser	NetWare 6.5
Safari* 1.0, 1.2	Macintosh OS X

IMPORTANT: Administration utilities are not yet supported in the Galeon (Ximian XD2) Web browser.

The following sections detail which NetWare products and services are supported on these platform/browser combinations. Restrictions and related issues are noted.

Supported End User Components

All end user interfaces included with NetWare 6.5 are supported by the browser/platform combinations listed in [Table 1 on page 41](#). These include the following browser-based product interfaces:

- ◆ eGuide
- ◆ iPrint
- ◆ NetStorage
- ◆ NetWare Web Search Server
- ◆ Novell® iFolder®
- ◆ Nterprise™ Branch Office™
- ◆ Virtual Office

Because end users typically do not access these services from a NetWare server, the NetWare GUI Browser is not applicable.

TIP: All of these end user products can be accessed by users either directly (refer to each product's documentation) or from the NetWare 6.5 Welcome Web site. For an introduction to the Welcome Web site, see [“About the NetWare 6.5 Welcome Web Site” on page 9](#).

Supported Administration Components

With the exception of Safari (Macintosh OS X) and Galeon (Ximian XD2), the browser-based administration utilities for the following products are supported by the browser/platform combinations listed in [Table 1 on page 41](#):

- ◆ Apache
- ◆ Novell iFolder
- ◆ NetWare Web Search Server

Administration Utilities Accessible through the NetWare 6.5 (Secure) Welcome Web Site

Many browser-based administration utilities can be accessed either directly, by typing in the correct URL, or through the secure NetWare 6.5 Welcome Web site (which, by default, runs on the secure port 2200).

The following products or services are supported by the browser/platform combinations listed in [Table 1 on page 41](#) and can be accessed through the secure Welcome Web site:

- ◆ Apache
- ◆ DirXML®
- ◆ DNS/DHCP (not accessible using the NetWare GUI Browser)
- ◆ eGuide
- ◆ Novell iFolder
- ◆ iManager

NOTE: The Safari Web browser (Macintosh OS X) cannot be used with iManager. For a complete list of supported iManager features, see [“Supported iManager Features” on page 44](#).

- ◆ iPrint (not accessible using the NetWare GUI browser)
- ◆ MySQL
- ◆ NetStorage
- ◆ NetWare Web Search Server
- ◆ Novell Remote Manager (NRM)
- ◆ Novell Storage Services (NSS)
- ◆ Novell exteNd™ Application Server
- ◆ SMS (not accessible using the NetWare GUI browser)
- ◆ SSH
- ◆ TCP/IP and IP Address Management
- ◆ Tomcat
- ◆ UDDI
- ◆ Virtual Office

Novell Remote Manager Features

All Novell Remote Manager (NRM) features for the following products or services are supported by the browser/platform combinations listed in [Table 2 on page 43](#):

- ◆ Configure TCP/IP
- ◆ Core OS
- ◆ IP Address Management
- ◆ iPrint
- ◆ iSCSI
- ◆ JVM*
- ◆ NSS (Volumes, Partitions, etc.)
- ◆ NTP
- ◆ Rsync (Nterprise Branch Office)
- ◆ Timesync

Table 2 Supported Web Browser and Platform Combinations for Novell Remote Manager

Web Browser	Platform
Internet Explorer 6 or later	Windows 2000 and XP
Mozilla 1.7	Red Hat Desktop, Red Hat 9 (running the Gnome desktop), SUSE 8.2 (running the Gnome desktop), SLES 9 SP1, and SUSE LINUX Professional 9.2 (running the Gnome desktop) The file upload feature might not complete consistently. A JVM change might be needed for applets (graphs, console screens) using this browser.

Web Browser	Platform
Firefox 1.0	Novell Linux Desktop (NLD), Windows 2000 and XP When using NLD, the file upload feature might not complete consistently. A JVM change might be needed for applets (graphs, console screens) using this browser.
SLES 9 SP1 (KDE 3.2)	Red Hat 9 (running the Gnome desktop) and SuSE 8.2 (running the Gnome desktop), SLES 9 SP1 and SUSE Linux Professional 9.2 (running the Gnome desktop) The file upload feature may not complete consistently. The JVM change may be needed for applets (graphs, console screens) using this browser.
NetWare GUI Browser	NetWare 6.5
Safari 1.2	Macintosh OS X

Supported iManager Features

Although most products can be managed using iManager, there are some limitations for specific functions based on the Web browsers and the platforms which they run on. To see which Web browser/platform combinations can be used for the various features in iManager, refer to [Table 3 on page 44](#).

Note the following:



















- ◆ A  in the row and column of an administration utility (or feature) indicates that Novell has both tested the utility on the specified platform and Web browser and supports the utility where it is used on the indicated platform and browser.
- ◆ A  in the row and column of an administration utility indicates that Novell has tested the utility on the specified platform and Web browser but does not support that utility when used on the indicated platform and browser.
- ◆ A NA (Not Applicable) indicator means that the utility or component is not meant to be used on the platform and browser combination specified.
- ◆ The Safari Web browser (Macintosh OS X) cannot be used with iManager.

Table 3 Browser/Platform Combinations for iManager Features

iManager Feature	Internet Explorer 6.0 SP1 on Windows 2000 and XP	Mozilla 1.4.1 or later on Red Hat 9 (running the Gnome desktop)	Mozilla 1.4.1 or later on SUSE 8.2, SLES 9 SP1, and SUSE Linux Professional 9.2 (running the Gnome desktop)	NetWare GUI Browser on NetWare 6.5
Archive/Version Management				
Clustering				
DHCP				
DirXML				

iManager Feature	Internet Explorer 6.0 SP1 on Windows 2000 and XP	Mozilla 1.4.1 or later on Red Hat 9 (running the Gnome desktop)	Mozilla 1.4.1 or later on SUSE 8.2, SLES 9 SP1, and SUSE Linux Professional 9.2 (running the Gnome desktop)	NetWare GUI Browser on NetWare 6.5
DNS	✓	✗	✗	✗
Dynamic Groups	✓	✓	✓	✗
eDirectory™ Administration	✓	✓	✓	✓
eDirectory Maintenance	✓	✓	✓	✓
File Protocols (AFP)	✓	✓	✓	✓
File Protocols (CIFS)	✓	✓	✓	✓
File Protocols (FTP)	✓	✗	✗	✗
File Protocols (NFAU)	✓	✗	✗	✗
Groups	✓	✓	✓	✗
Help Desk	✓	✓	✓	✓
Install and Upgrade	✓	NA	NA	NA
iPrint	✓	✓	✓	✗
LDAP	✓	✓	✓	✗
Licenses	✓	✓	✓	✗
NetStorage	✓	✓	✓	✗
NetWare Product Usage	✓	✓	✓	✗
NMAS™	✓	✗	✗	✗
Novell Certificate Access	✓	✓	✓	✗
Novell Certificate Server™	✓	✓	✓	✗
Nsure™ Audit	✓	✓	✓	✗

iManager Feature	Internet Explorer 6.0 SP1 on Windows 2000 and XP	Mozilla 1.4.1 or later on Red Hat 9 (running the Gnome desktop)	Mozilla 1.4.1 or later on SUSE 8.2, SLES 9 SP1, and SUSE Linux Professional 9.2 (running the Gnome desktop)	NetWare GUI Browser on NetWare 6.5
Partitions and Replicas	✓	✓	✓	✓
Rights	✓	✓	✓	✓
Schema	✓	✓	✓	✓
SMS	✓	✓	✓	✗
SNMP	✓	✓	✓	✗
Storage (NFS)	✓	✓	✓	✓
UDDI (Administer, Inquiry, and Publish)	✓	✓	✓	✗
Users	✓	✓	✓	✓
Virtual Office	✓	✓	✓	✓

B Documentation Updates

The following updates were made to this guide for NetWare® 6.5 Support Pack 3.

Location	Change
Appendix A, "Supported Web Browsers," on page 41	Reorganized and updated to include latest browser support.
Graphics throughout the manual	Updated to match the latest software.
Entire manual	Changed all references from NetWare Remote Manager to Novell® Remote Manager.

